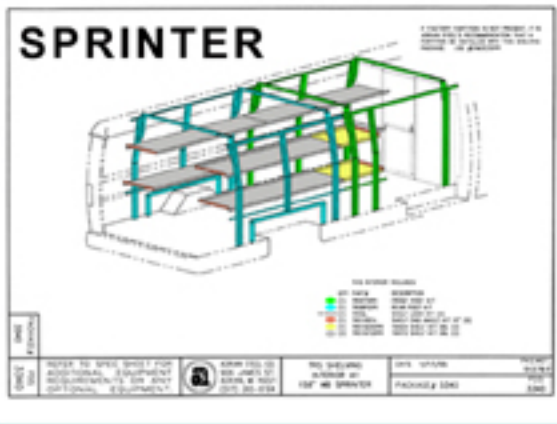


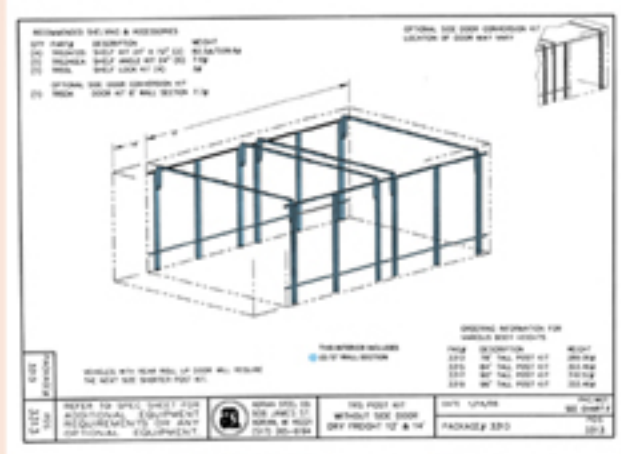
**Recommended Stocking Order**  
 Will provide the necessary parts  
 to upfit

- (1) 158" Sprinter of any configuration,
- (1) 12-14' by 72" High PDV of any configuration
- (1) Dry Freight Truck of any configuration

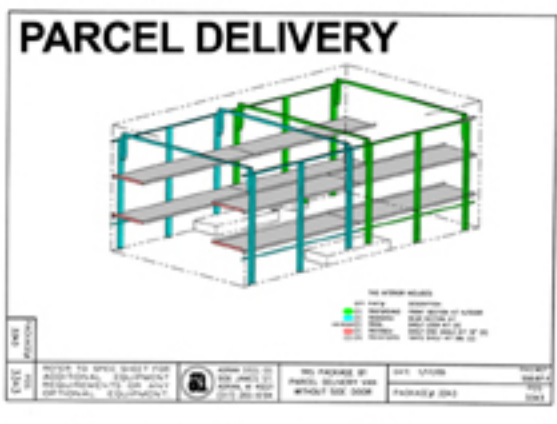


**(1) 3340 Sprinter Package**

**DRY FREIGHT**

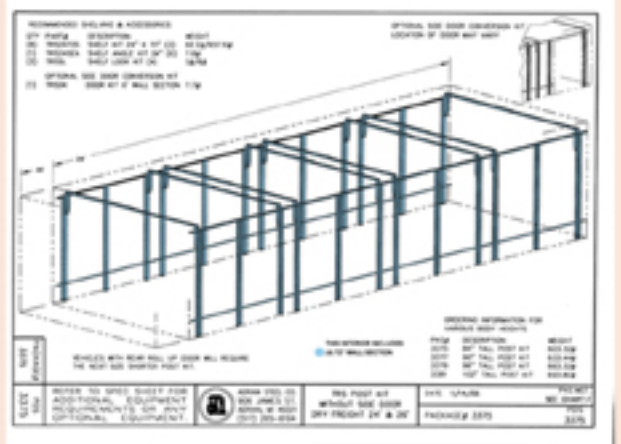


- (2) TRS2442S 24x42 Shelf Kit (2/Kit)
- (2) TRS2424S 24x42 Shelf Kit (1 shelf)
- (7) TRS24SEA Shelf end angle kit (6)
- (4) TRSSL Shelf Lock kit
- (2) TRSDK Door Kit
- (1) TRSFRS Stop Kit
- (8) TRS1972SPD 19x72 Shelf Kit (2/Kit)
- (1) TRS1924SPD 19x24 Shelf Kit (2 shelves)
- (3) TRS19SEA 19" Shelf end angle kit (6)
- (8) TRS2472S 24x72 Shelf Kit (2 shelves)



**(1) 3343 PDV Package**

- (1) TRSFSPDVWD Front section post for PDV with door
- (2) TRSSL Shelf Lock Kit
- (1) TRS19SEA Shelf end angle kit (6)



**(2) 3381 Dry Freight package 102" tall post kit**